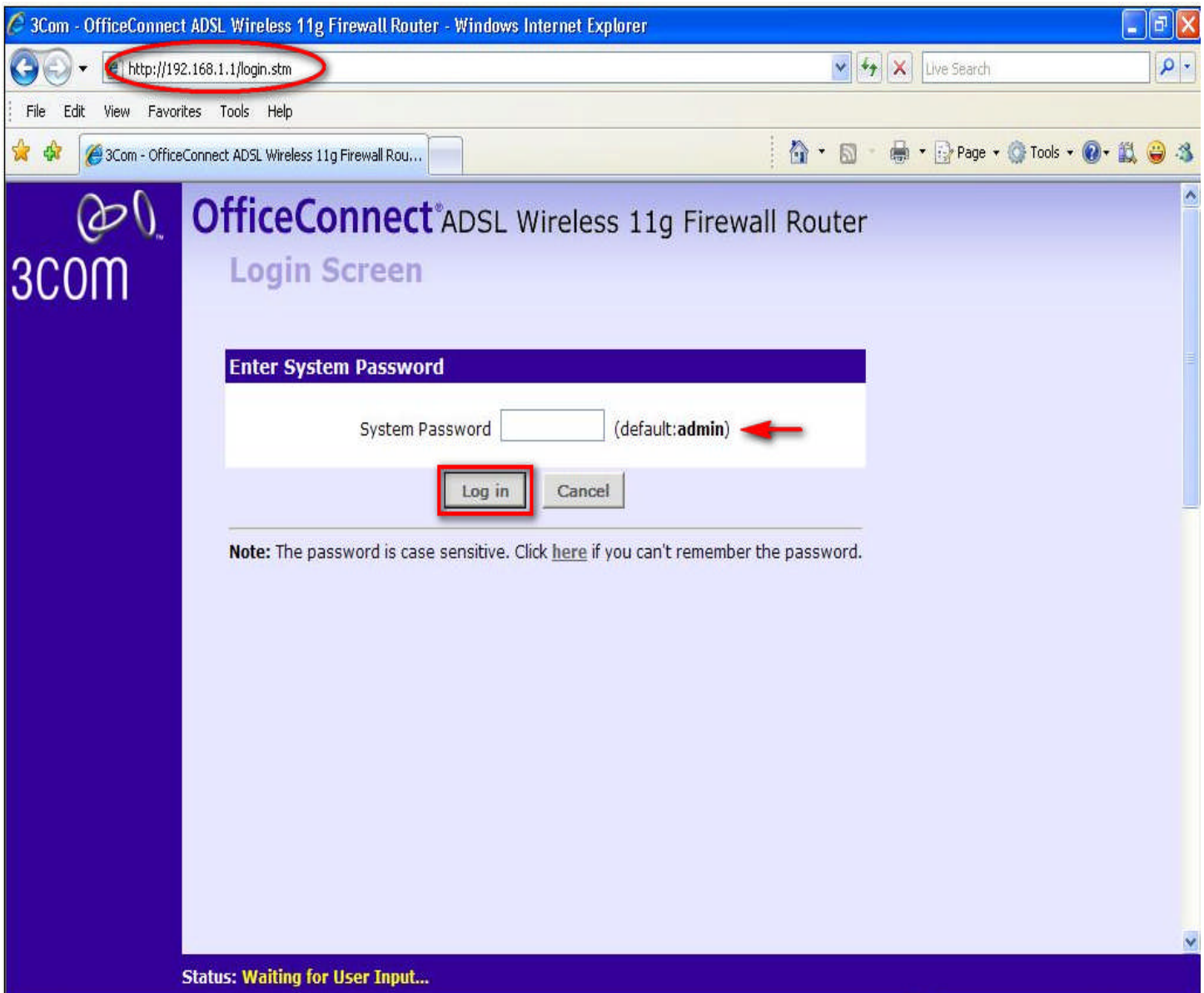


How to setup 3com Router [Dynamic Configuration]



- Login into the router with **192.168.1.1**
- The default password is: **admin**

3Com - OfficeConnect ADSL Wireless 11g Firewall Router - Microsoft Internet Explorer provided by TE Data Home Page

File Edit View Favorites Tools Help

Address 192.168.1.1

OfficeConnect[®] ADSL Wireless 11g Firewall Router

Welcome Setup Wizard/Change Password

Notice Board Password **Wizard**

Setup Wizard - Change Password

To ensure the security of your Router, it is recommended that you choose a new password - this should be a mix of letters and numbers, and not easily guessed by others. To leave the password unchanged, leave the fields blank and press 'Next'

Current Password	<input type="text" value="admin"/>
New Password	<input type="text" value="admin"/>
Confirm New Password	<input type="text" value="admin"/>

Next>> Cancel

Status: Ready

- Chose **Welcome** and then click **Wizard**
- And Write **admin** in **Current Password** and **New Password**

3Com - OfficeConnect ADSL Wireless 11g Firewall Router - Microsoft Internet Explorer provided by TE Data Home Page

File Edit View Favorites Tools Help

Address 192.168.1.1

OfficeConnect® ADSL Wireless 11g Firewall Router

Setup Wizard/Time and Time Zone

Notice Board Password Wizard

Setup Wizard - Time and Time Zone

Current time: January 1, 2003 12:08:55 AM

Using Time Server (NTP) Enable

Set Time Zone (GMT+02:00)Cairo

Time Server 192.5.41.41 - North America 192.5.41.41

Daylight Savings Enable

<<Back Next>> Cancel

3COM

- Welcome
- LAN Settings
- Wireless Settings
- Internet Settings
- Firewall
- QoS
- Advanced
- System Tools
- Status and Logs
- Support/Feedback

Powered by TE Data

Status : Ready

- And then Choose **Cairo**

3Com - OfficeConnect ADSL Wireless 11g Firewall Router - Microsoft Internet Explorer provided by TE Data Home Page

File Edit View Favorites Tools Help

Back Forward Stop Home Search Favorites Refresh Print Mail Print Mail Print

Address 192.168.1.1 Go Links

OfficeConnect[®] ADSL Wireless 11g Firewall Router

Setup Wizard/Connection Type

Notice Board Password Wizard

Setup Wizard - Connection Type

The following information is usually provided by your ISP.
Please select the Internet sharing protocol.


- PPPoE
- PPPoA
- Bridge Mode (For a single PC)
- Routing Mode over ATM
- Dynamic/Fixed IP in 1483 Bridge Mode (For Multiple PCs)

<<Back Next>> Cancel

3COM

- Welcome
- LAN Settings
- Wireless Settings
- Internet Settings
- Firewall
- QoS
- Advanced
- System Tools
- Status and Logs
- Support/Feedback

Powered by



Status : Ready

- And then Choose **PPPoE**

3Com - OfficeConnect ADSL Wireless 11g Firewall Router - Microsoft Internet Explorer provided by TE Data Home Page

File Edit View Favorites Tools Help

Address 192.168.1.1

OfficeConnect[®] ADSL Wireless 11g Firewall Router

Setup Wizard/PPPoE/Parameter Settings

Notice Board Password **Wizard**

Setup Wizard - Parameter Settings

The following information are usually provided by your ISP.

Username	<input type="text" value="user@tedata.net.eg"/>
Password	<input type="password" value="*****"/>
Retype Password	<input type="password" value="*****"/>
VPI/VCI	<input type="text" value="0"/> / <input type="text" value="35"/>
Encapsulation	<input type="text" value="LLC"/>

<<Back **Next>>** Cancel

Powered by

Status : Ready

- Type the **Username** and **Password** as shown above
- And then **VPI: 0 VCI: 35**
- And then **Encapsulation: LLC**

3Com - OfficeConnect ADSL Wireless 11g Firewall Router - Maxthon Browser

File Edit View Favorites Groups Options Tools Window Help

Address http://196.218.207.73/main_frame_admin1.stm

3Com - OfficeCon...

3COM

OfficeConnect® ADSL Wireless 11g Firewall Router

Setup Wizard/LAN Settings

Notice Board Password Wizard

Setup Wizard - LAN Configuration

IP Address	192	168	1	1
Subnet Mask	255	255	255	0

Setup Wizard - DHCP Server Parameters

DHCP server On Off

IP Pool Start Address	192	168	1	2	Auto IP Range
IP Pool End Address	192	168	1	254	

<< Back Next >> Cancel

Status : Ready

- And then we will leave the
- **IP Address: 192.168.1.1** and **Subnet Mask: 255.255.255.0** as **default**.
- **DHCP Server** will be set to **On**

3Com - OfficeConnect ADSL Wireless 11g Firewall Router - Microsoft Internet Explorer provided by TE Data Home Page

File Edit View Favorites Tools Help

Back Forward Stop Home Search Favorites

Address 192.168.1.1 Go Links

OfficeConnect[®] ADSL Wireless 11g Firewall Router

Setup Wizard/Wireless Setting

Notice Board Password Wizard

Setup Wizard - Wireless Settings

To set up the Wireless features, select a channel from the list and specify the SSID. Your Wireless PCs must be configured with the same settings to communicate with the Router.

Channel

SSID

Note: The default SSID is 3Com.

<<Back **Next>>** Cancel

Powered by

Status : Ready

- And then we will leave the the **Channel: 11** and **SSID: 3.Com** as **default**.

3Com - OfficeConnect ADSL Wireless 11g Firewall Router - Maxthon Browser

File Edit View Favorites Groups Options Tools Window Help

Address http://192.168.1.1/main_frame_admin1.stm

3Com - OfficeCon...

3COM

OfficeConnect® ADSL Wireless 11g Firewall Router

Setup Wizard/Configuration Summary

Notice Board Password Wizard

ADSL Parameters

Protocol	PPP over Ethernet
VPI / VCI	0 / 35
AAL5 Encapsulation	LLC

LAN Parameters

IP Address	192.168.1.1
Subnet Mask	255.255.255.0
DHCP Server	Enabled

ISP Parameters

User Name	username@tedata.net.eg
Password	*****

Wireless Parameters

Channel	11
SSID	3Com

<<Back **Apply** Cancel

Status : Ready

- And then click **Apply** to Save the configuration .

3Com - OfficeConnect ADSL Wireless 11g Firewall Router - Maxthon Browser

File Edit View Favorites Groups Options Tools Window Help

Address http://192.168.1.1/main_frame_admin1.stm

3Com - OfficeCon...

3COM OfficeConnect® ADSL Wireless 11g Firewall Router
Internet Settings

ATM PVC DNS Clone MAC Address

Description	VPI/VCI	Encapsulation	Protocol	Configure
PVC1	0/35	LLC	PPPoE	Edit
PVC2	-/-	---	---	Edit
PVC3	-/-	---	---	Edit
PVC4	-/-	---	---	Edit
PVC5	-/-	---	---	Edit
PVC6	-/-	---	---	Edit
PVC7	-/-	---	---	Edit
PVC8	-/-	---	---	Edit

Help

Welcome
LAN Settings
Wireless Settings
Internet Settings
Firewall
QoS
Advanced
System Tools
Status and Logs
Support/Feedback

LOG OUT

Status : Ready

- Then click **choose the internet settings** and press on **Edit** button

3Com - OfficeConnect ADSL Wireless 11g Firewall Router - Maxthon Browser

File Edit View Favorites Groups Options Tools Window Help

Address http://192.168.1.1/main_frame_admin1.stm

3Com - OfficeCon...

3COM OfficeConnect[®] ADSL Wireless 11g Firewall Router
Internet Settings

ATM PVC DNS Clone MAC Address

Edit PVC1

Connection Parameters

Protocol	PPPoE
IP Address	0.0.0.0
Subnet Mask	0.0.0.0
Username	username@tedata.net.eg
Password
Confirm Password
Connect Type	Always Connected
Idle Time (Minute)	20
MTU	1492
IPCP subnet	<input type="checkbox"/>
IPCP Subnet Populate	<input type="checkbox"/>
DHCP Server	<input type="checkbox"/>

ATM Settings

VPI/VCI	0 / 35	Auto Search
Encapsulation	LLC	
QoS Class	UBR	
PCR/SCR/MBS	4000 / 4000 / 10	

Help
Apply
Cancel

Status : Ready

- And be sure that **Connect Type** is set to **Always Connected** as shown above

TE Data

:: Copyright © 2007 . TE Data Support Team . All Rights Reserved ::

:: For Further Informations Call Us At 19777 ::

